



Sony Ericsson

Component Replacement

- electrical -



Spiro

W100i, W100a

CONTENTS

1	Replaceable Components	3
2	Component Placing.....	5
3	Repair Actions	6
	3.1 Shield Can Fence Modifications (N/A)	6
	3.2 Additional Repair Info	7
4	Revision History	11

***For general information about electrical repair related issues, refer to
1220-1336: Generic Repair Manual - electrical***



1 Replaceable Components

EXPLANATION OF ABBREVIATIONS USED IN THE COLUMN 'COMMENTS' BELOW

COMPONENT LOCATION

P = Primary side

S = Secondary side

MOISTURE SENSITIVITY LEVEL

MSLX (X = 1, 2, 2A, 3, 4, 5, 5A or 6)

For more information on moisture sensitivity levels:

Refer to 1220-1336: Generic Repair Manual – electrical, section 'Moisture & Baking'!

REPAIR METHOD

HA = Hot Air (removal & mounting)

ST = Soldering Tool (removal & mounting)

HA/ST = Hot Air for removal - Soldering Tool for mounting

BGA = BGA Station

BH = Bottom Heater

ADDITIONAL INFORMATION

⇒1 (2,3,4, etc.) = Proceed to 'Additional Repair Info' for further instructions in the indicated section(s).

CALIBRATION

C = Calibration of the phone is required after replacing the component

Calibration to be done by authorized centers only!



Component Replacement (elect)

Position	Component	Part no.	Comments
D401	Diode Protection 5, V SOD882	1211-8286	P HA ⇒2
D404	Diode Protection 5, V SOD882	1211-8286	P HA ⇒3
D405	Diode Protection 5, V SOD882	1211-8286	P HA ⇒3
D413	Diode Protection 5, V SOD882	1211-8286	P HA ⇒5
D414	Diode Protection 5, V SOD882	1211-8286	P HA ⇒5
D415	Diode Protection 5, V SOD882	1211-8286	P HA ⇒5
D416	Diode Protection 5, V SOD882	1211-8286	P HA ⇒6
D607	Diode Protection 5, V SOD882	1211-8286	P HA ⇒2
D609	Diode Protection 5, V SOD882	1211-8286	P HA
D610	Diode Protection 5, V SOD882	1211-8286	P HA
D402	Varistor	A/308-0000-00025	P HA ⇒5
D406	Varistor	A/308-0000-00025	P HA ⇒7
D407	Varistor	A/308-0000-00025	P HA ⇒7
D408	Varistor	A/308-0000-00025	P HA ⇒7
D409	Varistor	A/308-0000-00025	P HA ⇒7
D410	Varistor	A/308-0000-00025	P HA ⇒7
D411	Varistor	A/308-0000-00025	P HA ⇒7
D412	Varistor	A/308-0000-00025	P HA ⇒7
D417	Varistor	A/308-0000-00025	P HA ⇒7
D704	Varistor	A/308-0000-00025	S HA ⇒1
D403	Diode Protection 24, V SOD-882	1203-9069	P HA ⇒3
J401	Battery Connector	1000-0412	P BGA ⇒8,9
J403	Micro USB Connector	A/314-0000-00447	P BGA ⇒6,9
J404	SIM Card Connector	1230-2848	P BGA ⇒10
J405	Micro SD Card Connector	A/314-0000-00484	P BGA
J501	Camera Socket	1220-0574	P BGA ⇒2
J502	Conn FPC 41p	A/314-0000-00443	S BGA
J601	Audio Jack	A/314-0000-00453	P BGA ⇒12,13
J602	Speaker Connector	A/314-0000-00454	P HA
J603	Speaker Connector	A/314-0000-00454	P HA
J904	RF Connector	A/314-0000-00372	P HA/ST
RN501	Chip Resistor Array	A/301-1000-00185	P HA ⇒4
SW720	Side Key Switch	A/315-0000-00047	P HA ⇒16
SW721	Side Key Switch	A/315-0000-00047	P HA ⇒16
U402	IC Overvoltage protection 5,85V	1234-5393	P MSLX3 HA ⇒11
U701	EMI Filter	A/308-0000-00046	S HA ⇒1
U702	EMI Filter	A/308-0000-00046	S HA ⇒1
U704	IC Hall Switch	1229-6837	S HA
Z605	Vibrator	1218-9713	P BGA ⇒14
Z901	Spring Connector Antenna	A/314-0000-00229	P HA ⇒15
Z903	Spring Connector Antenna	A/314-0000-00229	P HA ⇒15

2 Component Placing

To access the Component Placing document, double-click the icon below.
Applicable for on-screen viewing only – icon not shown on hard-copies.





3 Repair Actions

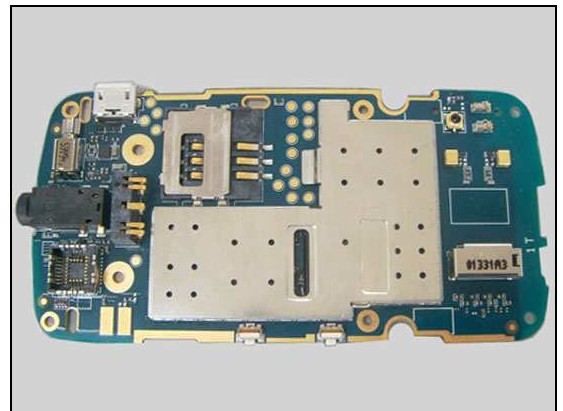
Refer to the Tools Catalogue/Matrix for information about equipment required for PBA repair!

3.1 Shield Can Fence Modifications (N/A)

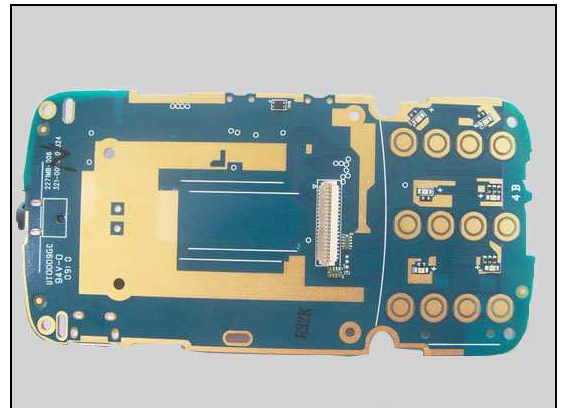
Refer to the pictures below of the primary and secondary sides for repairs that require the Shield Can Fence to be modified:

- the shield can lid has to be removed
- the red symbols show where the frame should be cut to enable rework
- after rework the height of the frame should not be affected
- it should not be visible that rework has been carried out when the lid has been mounted

Primary Side



Secondary Side





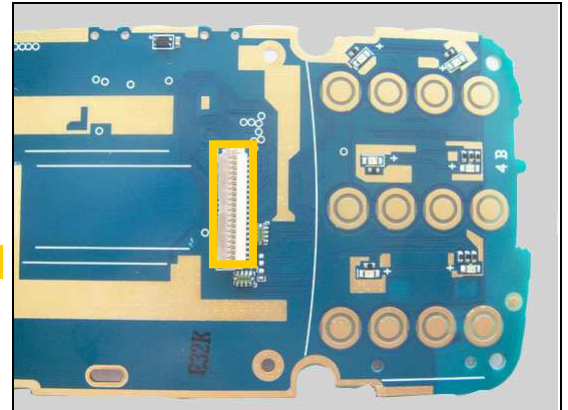
Repair Actions

3.2 Additional Repair Info

1

D704, U701, U702

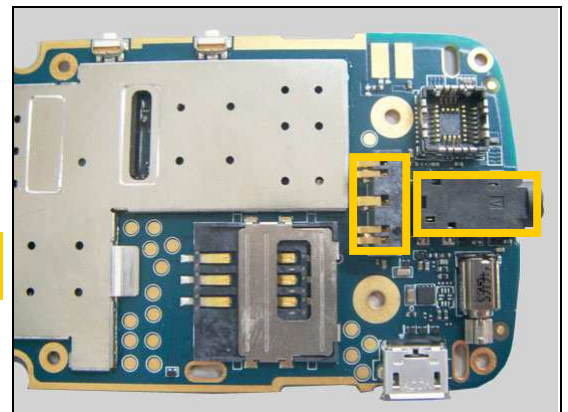
Protect the Hinge FPC connector with capton tape!



2

D401, D607, J501

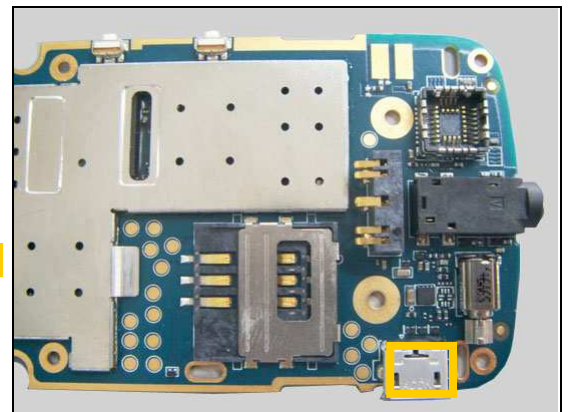
Protect the Audio Jack and Battery Connector with capton tape!



3

D403, D404, D405

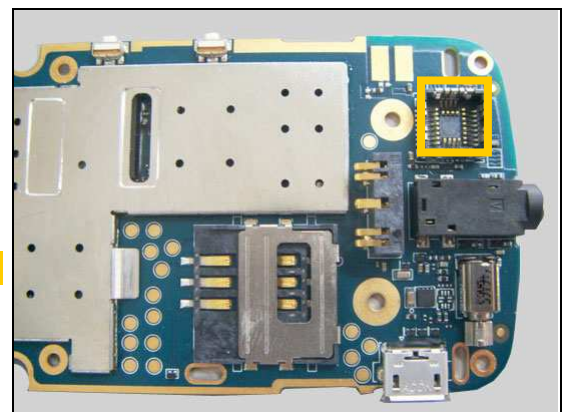
Protect the Micro USB connector with capton tape!



4

RN501

Protect the Camera Socket with capton tape!



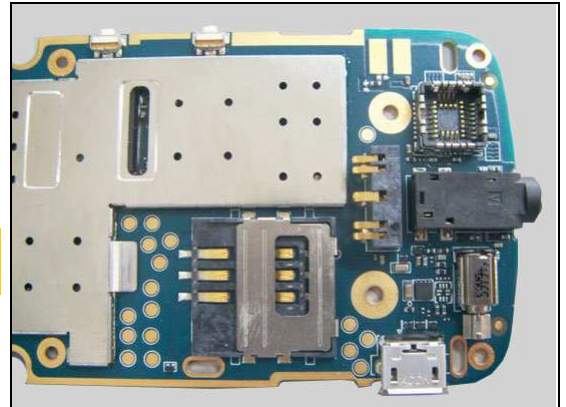


Repair Actions: Additional Repair Info

5

D402, D413, D414, D415

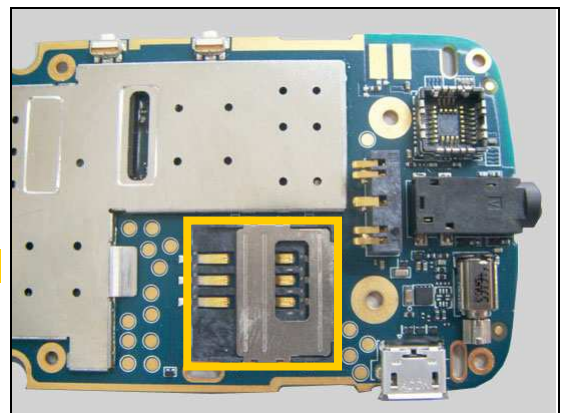
Remove the SIM connector before replace these four parts!



6

D416, J403

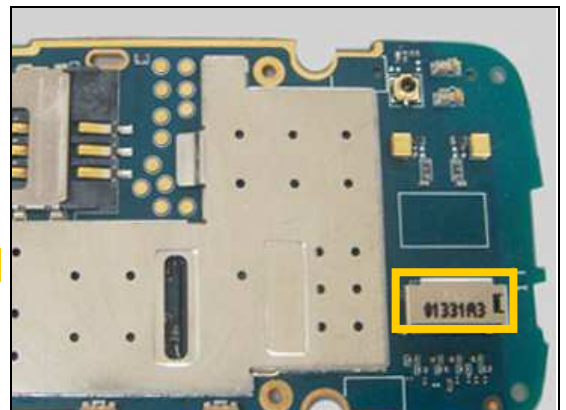
Protect the SIM connector with capton tape!



7

D406, D407, D408, D409, D410, D411, D412, D417

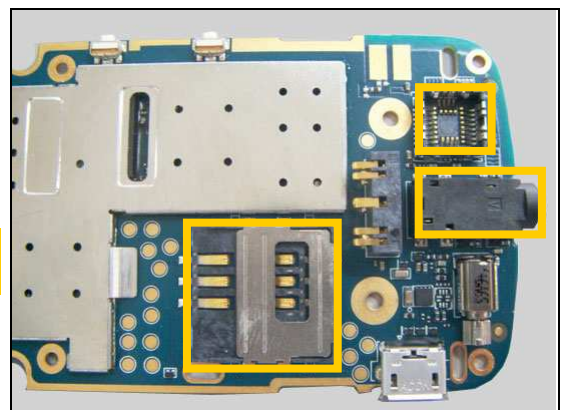
Protect the Micro SD Card Connector with capton tape!



8

J401

Protect the Camera Socket, Audio Jack and SIM connector with capton tape!



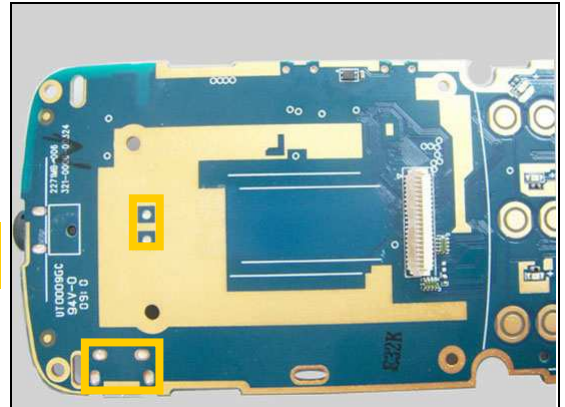


Repair Actions: Additional Repair Info

9

J401, J403

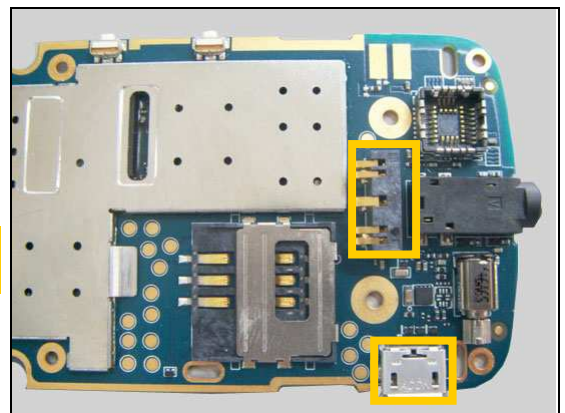
Add solder in the respective holes with Soldering Iron after mounting!



10

J404

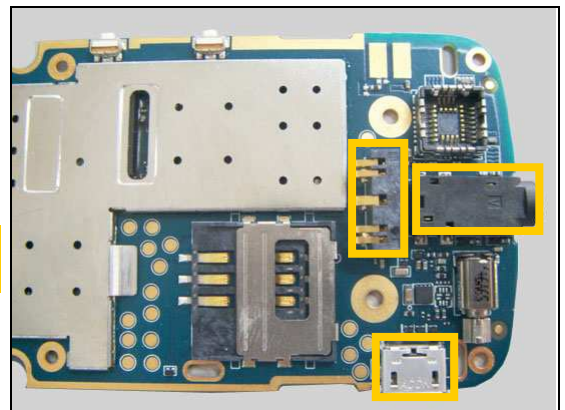
Protect the Battery Connector and Micro USB connector with capton tape!



11

U402

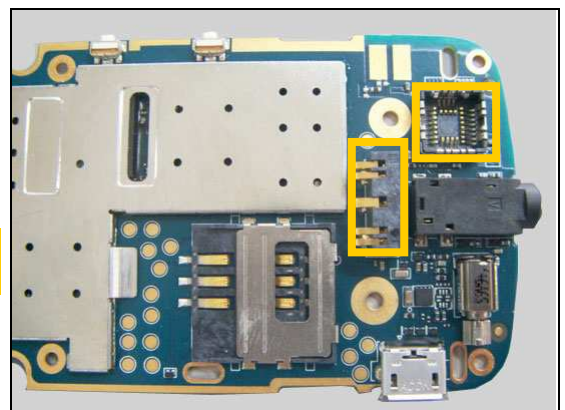
Protect the Audio Jack, Battery Connector and Micro USB connector with capton tape!



12

J601

Protect the Camera Socket and Battery Connector with capton tape!



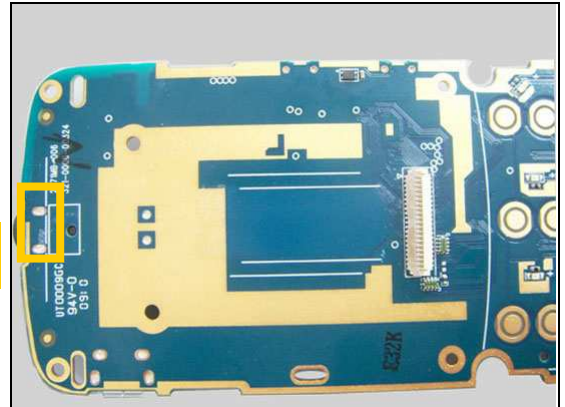


Repair Actions: Additional Repair Info

13

J601

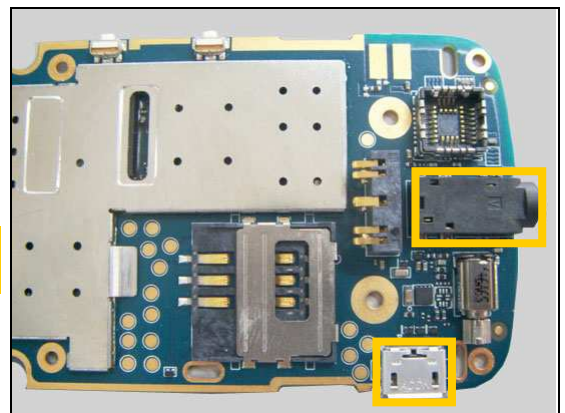
Add solder in the holes with Soldering Iron after mounting!



14

Z605

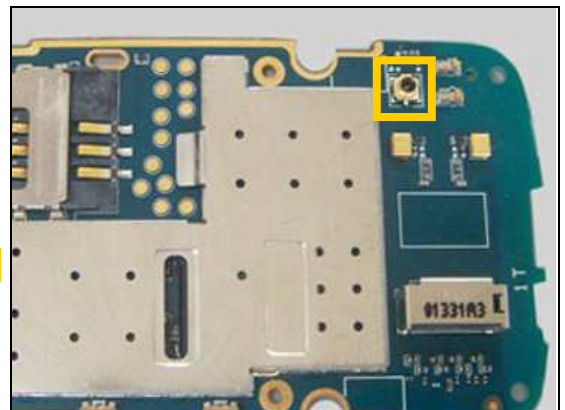
Protect the Micro USB connector and Audio Jack with capton tape!



15

Z901, Z903

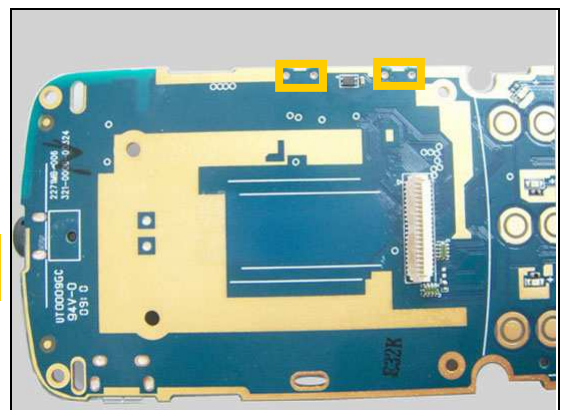
Protect the RF Connector with capton tape!



16

SW720, SW721

Add solder in the holes with Soldering Iron after mounting!





4 Revision History

Rev.	Date	Changes / Comments
1	2010-Jul-26	Initial release
2	2010-Aug-13	Change repair method of J401, J501, J601, Z605, J404, J405, J502.
3	2010-Dec-01	Add A/314-0000-00447 (see related SI) and modify chapter 3.2 accordingly.
4	2011-Jan-07	<ol style="list-style-type: none">1. Replace A/301-1000-00027 with A/301-1000-00185.2. J403 (A/314-0000-00447) related SI number is 18341-88672.3. Add J501 in additional repair info number 2 of chapter 3.2 and add corresponding comments of J501.4. Update the caution in additional repair info number 10 of chapter 3.25. Delete J501, add U402 and modify caution in additional repair info number 11 of chapter 3.2 and add corresponding comments of U402.